

central control module:

Article: VD-V01

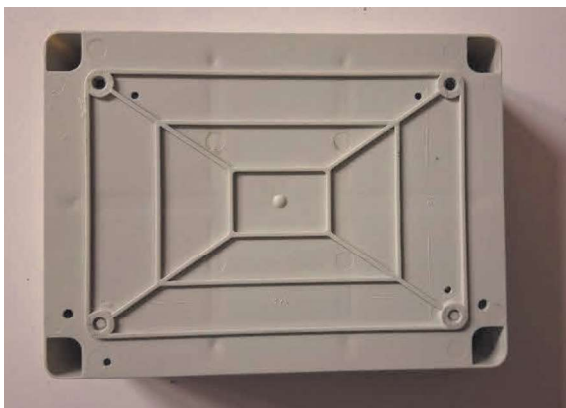
Box:

Need 2 or 3 sides milling:

Front (connectors side):



Bottom (pcb holder to box and box holders to device):



Back side (only with 24vdc brake) : auxiliary power supply board for 24vdc brake



Need milling similar as three pictures. For finally we give control board for sample.

22V power supply:

This need only if the device is installed with 24Vdc brake.

input [REDACTED]

output: 22Vdc 1A,

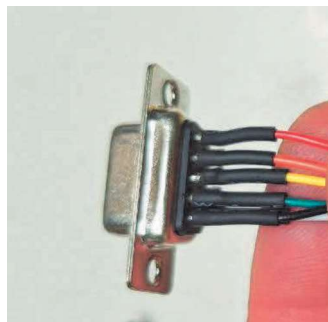
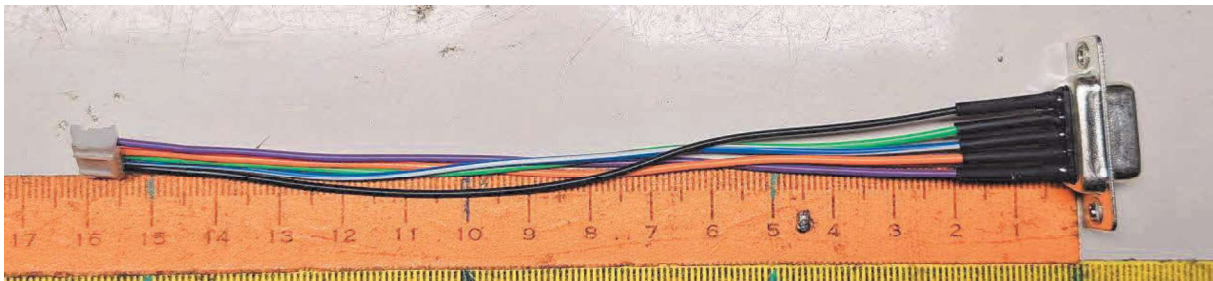
This board will be fixing for back side holes.

Motor signal wire :

A side: JST PHR-4 6way

B side: Dsub 9 way female,

5 pcs wire as sample. The white wire is not need.



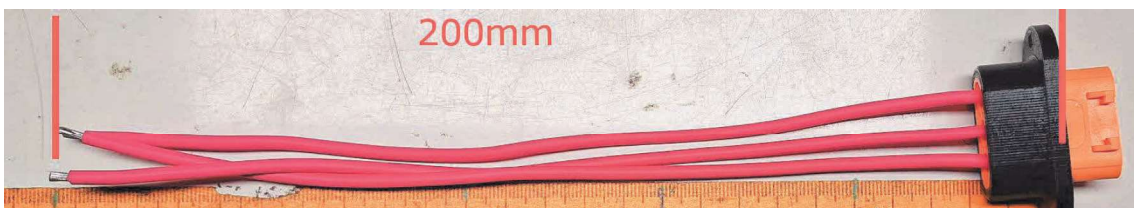
Motor 3 phase power:

Connector: AMASS LCC40-M

wire : 3x 2,5mm² (need extra fill in wire in crimp.)

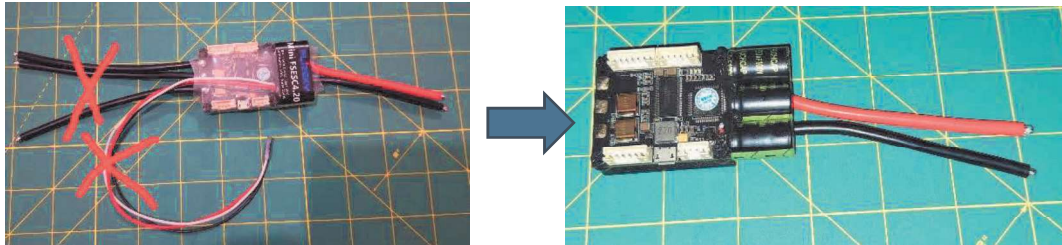
fixing frame for conector (black on picture):

Need designe for your technologies (milling, 3D print , epoxy casting or ect.)need bond it to connector.

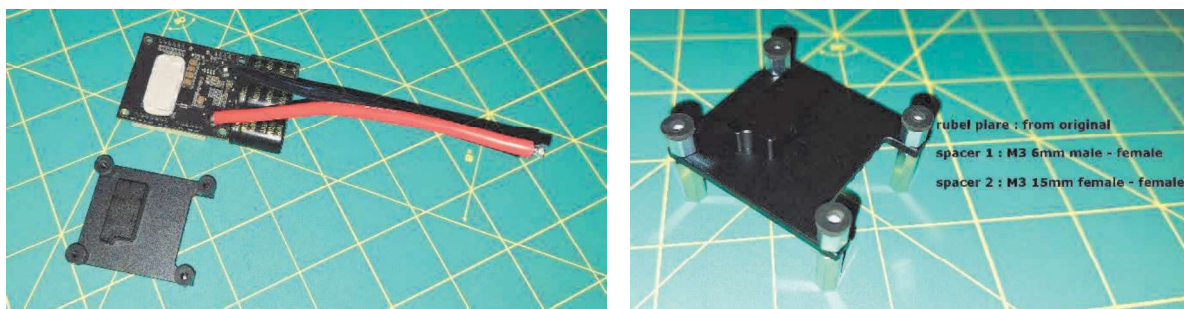


Motor control board:

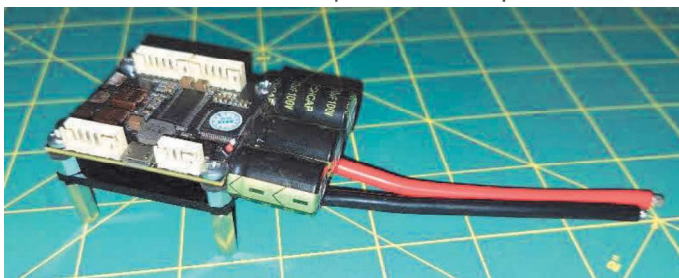
- Remove the marked wires:



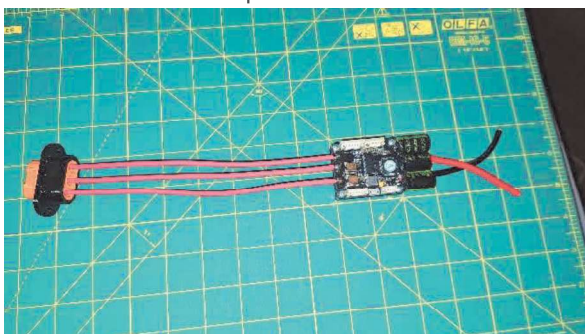
- Change and modify the spacers :



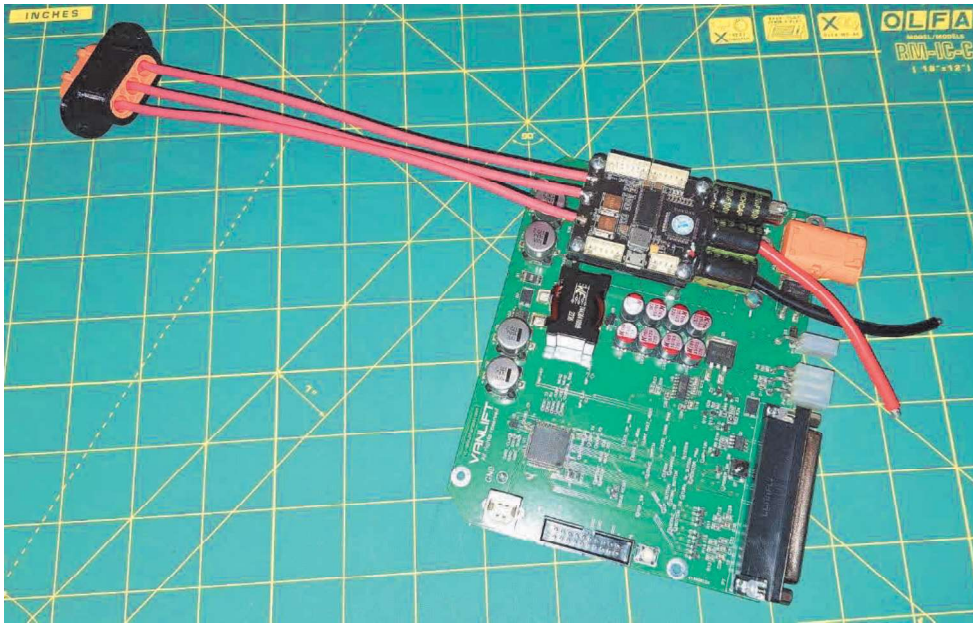
- Installation the with new spacers with 4pcs M3x5mm screw:



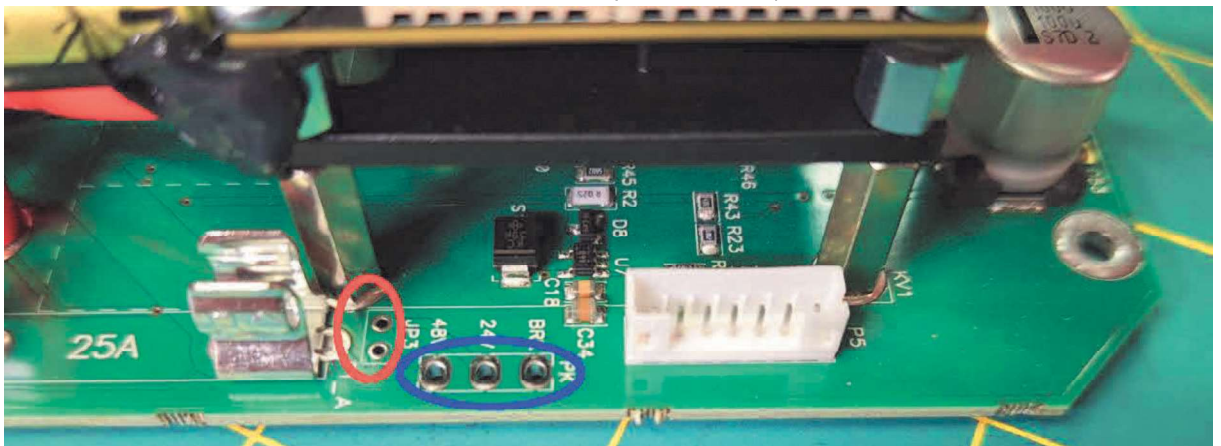
- Solder the motor 3 phase connector :



- Install the drive board up to main board with 4pcs M3x5mm screw :

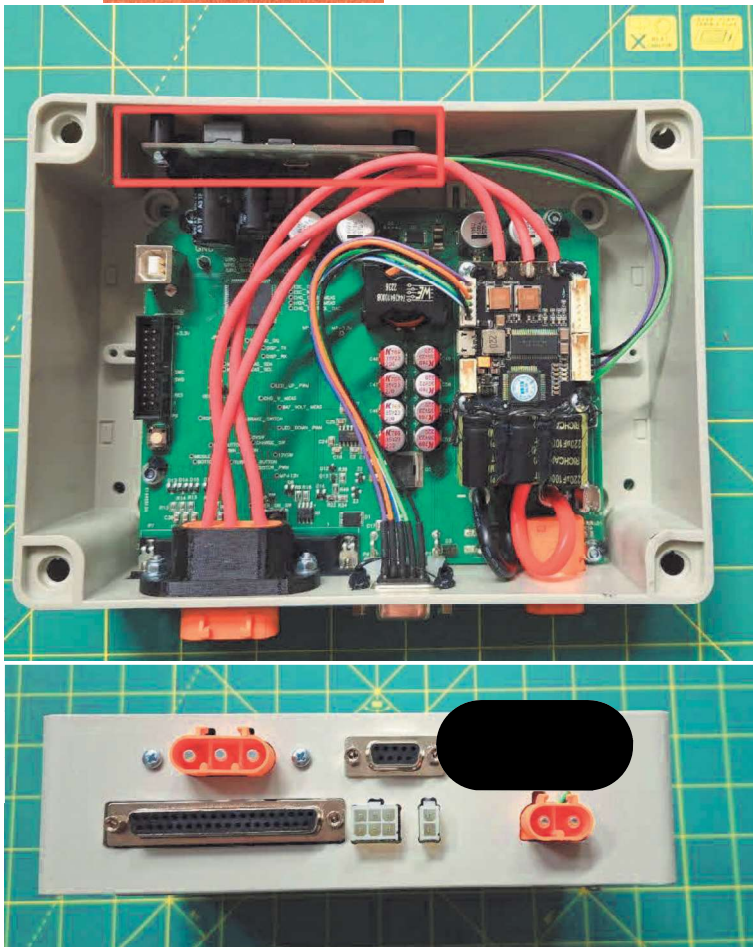


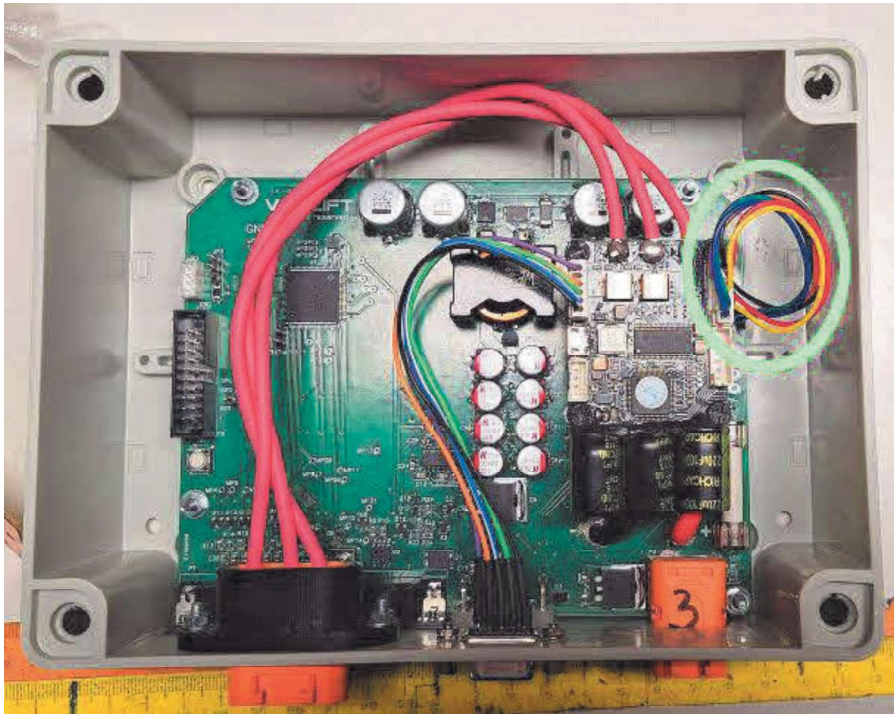
- Solder the motor drive power supply in to the main board :
 red : (+)
 black : (-)
- If the brake is 24Vdc then need external power supply (PK connector, marked blue), if the brake is 48Vdc then need short circuit at JP3 (marked red).



Control box installation:

- the red mark: power supply for 24Vdc brake,
- below the board need 10mm spacer, for instalation need M3 screws,
- for Dsub 9 need Dsub nut,
- need fixing the capacitors on motor drive and all nuts with silicon coating.
- behind the box need 4pcs ruber foot : M4 D10x10 soft ruber.





We will give the next parts for control box:

- main control board,
- motor drive board,
- box,
- green marked wire between the main and motor drive board.

We will NOT give the next parts for control box:

- brake power supply,
- rubber feet,
- bolts, spacer, connectors, ect.